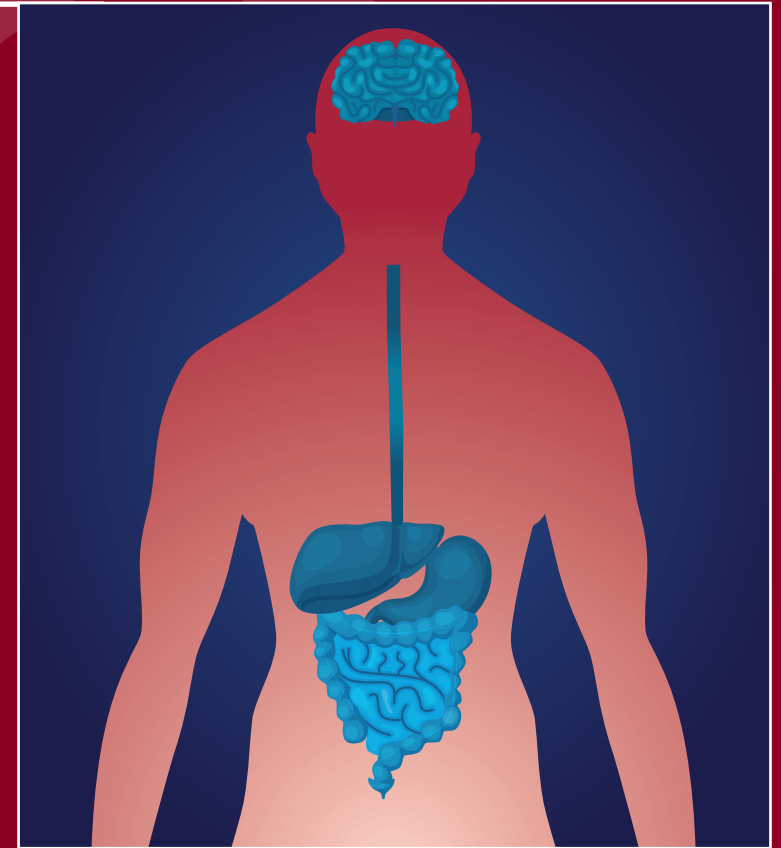

DIGESTIVE DISEASES

2022-2025 Edition



UNIGASTRO



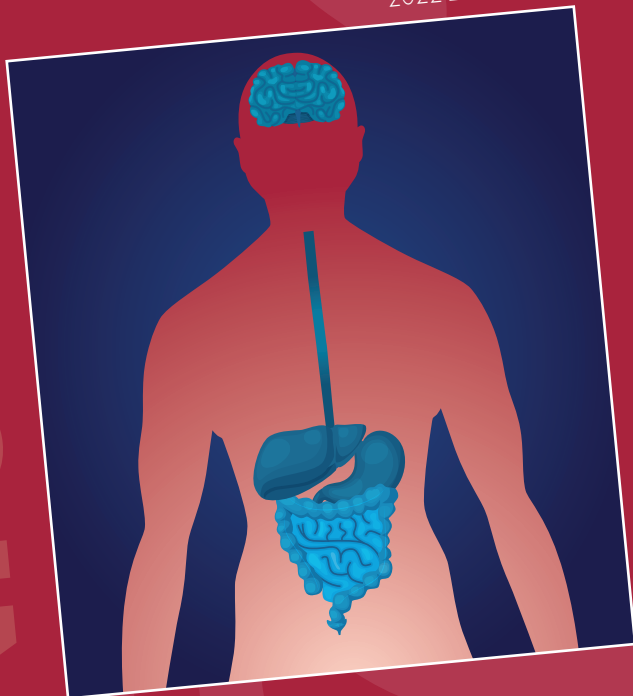
Coordinamento Nazionale
Docenti Universitari
di Gastroenterologia

EDITRICE GASTROENTEROLOGICA ITALIANA

UNIGASTRO

DIGESTIVE DISEASES

2022-2025 Edition



Coordinamento Nazionale
Docenti Universitari
di Gastroenterologia
EDITRICE GASTROENTEROLOGICA ITALIANA

TRIM SIZE 19,5 x 26,5
EXTENT 440 PAGES
PAPERBACK
ISBN 978-88-214-5635-0
€ 60 \$ 75 £ 60

FULL COLOR

UNIGASTRO

DIGESTIVE DISEASES

2022-2025 Edition

UNIGASTRO (National Academic Committee in Gastroenterology) is an association focused on promoting high-level teaching in Gastroenterology.

Over the last 25 years UNIGASTRO has been working on a textbook thought for the students who attend the classes of Gastroenterology in the different integrated courses of the Medicine and Surgery degree, published by Editrice Gastroenterologica Italiana every three years.

The new edition offers students a textbook that takes into account the continuous growth of scientific research and provides the necessary knowledge for a correct transition from theory to clinical practice.

CONTENTS

DIGESTIVE DISEASES

2022-2025 Edition

The volume is composed of 51 chapters, organized in 6 sections:

- The first section (chapters 1-4) presents introductory topics, with a special focus on nutrition, malnutrition, microbiota and New Technologies;
- The second section (chapters 5-14) discusses oesophagus, stomach, and duodenum diseases;
- The third section (chapters 15-26) describes small bowel and colon diseases.
- The fourth section (chapters 27-38) focuses on liver diseases;
- The fifth section (chapters 39-48) is centred around the biliary tract and pancreas diseases;
- The sixth section (chapters 49-51) discusses the emergencies in Gastroenterology.

ONLINE MATERIALS

As for the previous editions, the handbook is made up of both a paper book and a completely renewed multimedia content that are accessible directly through a code printed on the inner cover. Students gain access to:

DIGESTIVE DISEASES

2022-2025 Edition

CLINICAL CASES

1. Chronic Abdominal Pain
2. Acute Abdominal Pain
3. Pyrosis and Epigastralgia
4. Digestive Bleeding
5. Disorders of the Bowel Habits
6. Hypertransaminasemia
7. Anemia
8. Jaundice
9. Dysphagia
10. Ascite

DIAGNOSTIC PROCEDURES

1. Breath Test
2. Esophageal manometry, pH- and pH-Impedance monitoring
3. Paracentesis
4. Percutaneous Endoscopic Gastrostomy (PEG)
5. Esophagogastroduodenoscopy
6. Colonoscopy
7. Endoscopic Retrograde Cholangiopancreatography
8. Endoscopic Ultrasound
9. Enteroscopy
10. Abdominal Ultrasonography
11. Liver Biopsy
12. CT and Nuclear Magnetic Resonance
13. Endoscopic Therapeutic Procedures
14. Interventional Radiology

EXTRA CONTENTS

1. Pregnancy and Gastroenterological Diseases
2. Skin and Oral Lesions In Gastroenterological Disorders
3. Intestinal Mucosal Immunity
4. Covid-19 and Digestive Diseases

SELF-ASSESSMENTS

Multiple Choice Questions by Chapter

EDUCATIONAL TOOLS

DIGESTIVE DISEASES

2022-2025 Edition

Each chapter of the volume displays its learning objectives summarised in the first page, giving the student a guide for their preparation. Essential key concepts and up-to-date references are indicated at the end of each chapter.

LEARNING OBJECTIVES

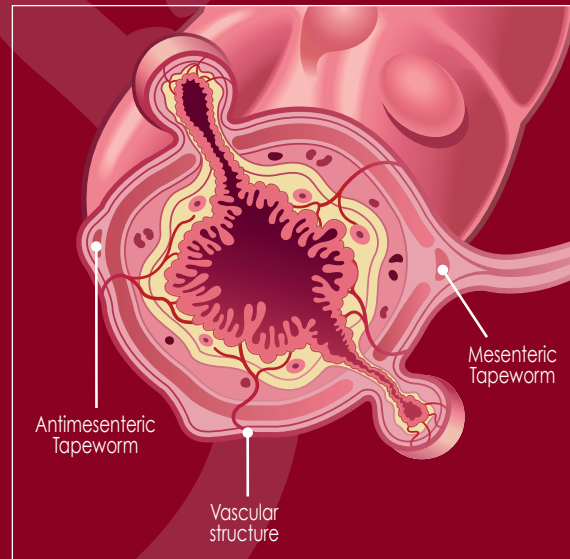
- ◆ To provide the epidemiology, anatomiclinical characteristics, clinical outcome, course, and complications of Crohn's disease.
- ◆ To understand difficulties in diagnosis and indications for diagnostic techniques in Crohn's disease.
- ◆ To learn the indications for medical and surgical treatments for Crohn's disease.

KEY CONCEPTS

- ◆ Crohn's Disease is a chronic inflammatory disease of unknown aetiology, characterized by recurrent phases of remission and relapse of symptoms, mainly diarrhoea, abdominal pain, weight loss, fever.
- ◆ Intestinal lesions in Crohn's Disease may involve any area of the gastrointestinal tract, although more frequently the terminal ileum and the colon. Typical features include transmural inflammation, focal and patchy lesions, and fibrostricturing, fistulizing or non-penetrating non-fistulizing behavior.
- ◆ The diagnosis may be difficult, as there is no a gold standard diagnostic approach. Endoscopic and radiological findings may help to support diagnosis, to define disease activity and complications, and for assessing its course.

EDUCATIONAL TOOLS

This new edition provides to the students a user-friendly manual, up to date with the most recent research and rich of full color illustrations and photographs.



DIGESTIVE DISEASES

2022-2025 Edition

